

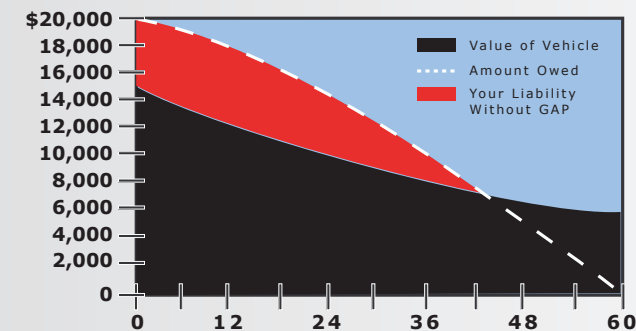
GAP PROTECTION

What is GAP Protection?

GAP Protection will pay the difference between your loan balance* and the Actual Cash Value (ACV) of your vehicle if your vehicle is declared a total loss due to collision or theft. Actual amount of claim may be affected by limits on the maximum loan balance covered** and other important conditions and exclusions. See contract for specific terms, limits and exclusions.

When do you need GAP protection?

Most people owe more than their vehicle is worth for the first few years of ownership due to taxes, registration and fees. In addition, initial depreciation exceeds the amount of principal paid back during the first few years of the loan. (see Graph below for Example)



Planning to pay off your loan early?

Good for you! However, the majority of GAP claims occur in the first 24 months of ownership. Purchase GAP now so you are covered when you need it most.

Will GAP cover the deductible?

GAP will cover your deductible up to pre-set limits***.

* Loan balance at time of loss. Revolving balances are calculated by re-amortized the initial loan balance using a 60 month term.
 ** The maximum loan balance covered is limited. Any amount in excess of the limit is not covered by GAP and is the responsibility of the borrower. See contract for specific limits.
 *** Deductible reimbursement benefits are not available in all states. Ask your representative if this benefit is available where you live.

THEFT PROTECTION

What is Theft Protection?

Theft Protection provides a permanent identification marking on your vehicle. If your vehicle is stolen and is not recovered within 30 days, you will receive a replacement allowance in the amount of the Actual Cash Value of your unit up to \$2500, \$5000 or \$6,000 to be used as a credit towards the purchase of a replacement vehicle. See contract for specific limits, terms and conditions.

Why do you need Theft Protection?

- **Theft Rates are on the Rise** - 70,613 Motorcycles were Stolen Last Year.
- **Protect Yourself** - Theft accounts for approximately 22% of all Totaled Motorcycles.
- **Don't Become a Statistic** - There is a vehicle stolen every 20 seconds in the US.
- With Numbers like this everyone needs Theft Protection!

How does it work?

- Your vehicle is marked with a permanent ID sticker that can be used to identify your vehicle and deter thieves.
- If your unit is not recovered within 30 days, you will receive the replacement allowance up to the stated limits.
- The replacement allowance is paid in addition to your primary insurance (if insured).
- Most primary insurance doesn't cover added parts and accessories. To fully protect your customized unit you need RpmOne's Theft coverage.



Don't let this happen to you!
70,613 Motorcycles were Stolen Last Year

ROAD HAZARD TIRE & WHEEL PROTECTION

What is Road Hazard Tire & Wheel Protection?

Road Hazard Tire & Wheel Protection will reimburse you for expenses incurred to repair or replace tires and wheels damaged by road hazards including nails, pot holes, etc. Limits apply - see contract for specific coverage and exclusions.

Why Purchase Tire and Wheel Protection?

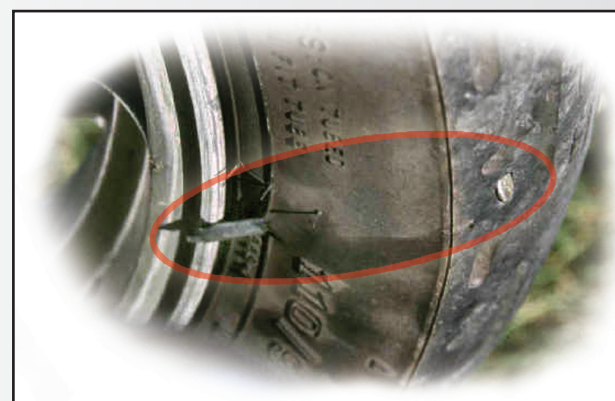
Given today's road conditions, picking up a nail or hitting a pot hole happens frequently. The tires used on new motorcycles are high-tech and expensive to replace. Ask your representative how much it would cost to replace your tires and wheels. Then consider the relative low cost of this product compared to the replacement cost for just one tire & wheel.



Protection includes towing reimbursement due to road hazard claims.

Add Full Roadside Assistance to receive:

- 24/7 Towing and mechanical breakdown assistance
- Battery boost/jumpstart
- Fuel and water delivery
- Lockout/lost key assistance
- Emergency travel benefits
- Hotel and travel discounts



PREPAID MAINTENANCE

What is Prepaid Maintenance?

The best way to avoid expensive repair costs is to maintain your vehicle regularly. Prepaid maintenance is a convenient and affordable way for you to maintain your vehicle according to the owner's manual maintenance schedule.

Why Purchase Prepaid Maintenance?

Prepaid Maintenance was designed to eliminate high cost surprises and provide predictable maintenance costs. This program offers convenience to our customers with the best service at reduced prices.

Features and Benefits

Do Not VOID your Warranty

- Perform factory recommended maintenance that covers all parts and labor (see owners manual).
- Fulfill your obligation to perform proper maintenance during your warranty period keeping your warranty claims valid.

Increase Value

- Increase the resale value by taking care of your asset.
- Receive reduced prices for maintenance services.
- Finance your vehicle's maintenance costs over a year or more.

Better Budgeting

- Eliminate the risk of high cost surprises.
- Bring your vehicle in when needed, not when you can afford to have it serviced.
- Achieve peace of mind, so you do not get hit with a high bill.
- Lock in current prices for parts and labor to avoid inflation.



Rev-up Your Buying Power!

90 Days No Interest-No Payment-with minimum purchase of \$100 required†*

Available on new and existing accounts**
 Fast Credit Decisions - Purchase can be made upon approval

Great for:

Warranties and Approved Insurance Products
 Parts & Accessories
 Service and Maintenance
 Generators and Untitled Products

†FINANCE CHARGES accrue from the date of purchase and all accrued FINANCE CHARGES will be added to your account for the entire promotional period if qualifying purchases are not paid in full before the end of the promotional period or if you fail to make any required payment on your account when due. Minimum monthly payments of the greater of \$10 or 2.5% of your promotional balance are required for 6 month No Interest and 12 month No Interest promotions. See below for more details.

*With credit approval for qualifying purchases made on the Drive Card. As of October 3, 2005 APR for purchases: 21.90%. Default Rate APR 23.90% (rates may vary). Minimum Finance Charge \$1.50. See card agreement for details. Offer is for individuals, not businesses. Credit promotions are subject to change without notice. Only available at participating dealers.

** The Drive Card cannot be used for the purchase or the down payment on titled vehicles, whether for use on land, water or air.



Phone: 561-741-4447
 Fax: 561-741-4449
 www.rpmone.com



Protecting Yourself Has Never Been Easier!

Don't Run Into the **RED!**



EXTENDED WARRANTY COVERAGE

What is an Extended Warranty?

The Extended Service Contract will pay to repair mechanical breakdowns due to manufacturer defects after the manufacturer warranty expires.

Why purchase an Extended Warranty Contract?

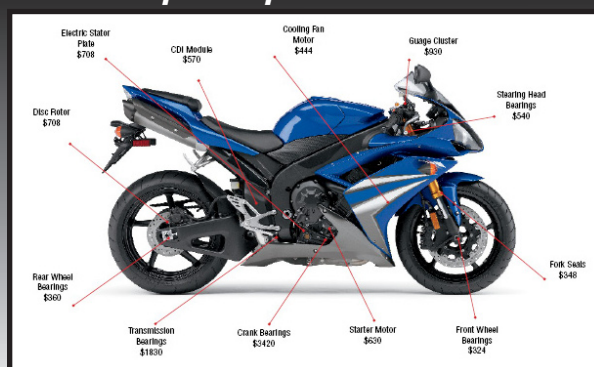
Manufacturer warranties expire within a limited time for a reason. There are considerable repair costs expected after the factory warranty expires. Even if you are mechanically inclined, advances in technology require special tools and training to work on your unit.

Features and Benefits

- **Nationwide Protection** - Coverage is effective wherever you ride. Repairs can be performed by any authorized facility in the U.S. or Canada.
- **Transferable Protection** - Increase the resale value of your vehicle by transferring your coverage to the next private purchaser.
- **Pick-up and Delivery Reimbursement** - Pick-up and Delivery reimbursement is convenient when a covered component fails and disables your vehicle. Pick-up and Delivery charges up to \$60 will be reimbursed. *
- **Rental Reimbursement** - Should your vehicle have a failure of a covered component we will reimburse you for your substitute transportation costs up to a maximum of \$210. *
- **Travel Expenses 50/50** - We will pay your meals and lodging expenses up to \$225, for expenses incurred when your motorcycle has a failure of a covered component. *
- **Emergency Roadside Assistance** - Unlike most service contracts, we provide coverage even if there is no service contract claim. Sign and Tow for: *Towing Assistance / Battery Boost / Flat Tire Assistance / Gasoline, Oil, Fluid & Water Delivery Service.*

* For Features and Benefits see contract for eligibility.

Example Replacement Costs



PLATINUM PROGRAM

Motorcycle/ATV/Scooter Coverage



Engine

All internally lubricated parts; valve covers; intake manifolds; oil pump; fanmotor; valves; engine mounts; cylinder head(s); engine block/crankcase and cylinder barrels if damaged as a result of the Failure of an internally lubricated covered engine component.



Water Pump

Impeller shaft; bearings; bushings and housing.



Turbocharger

Internal parts; vanes; shafts; bearings, bushings, waste gate and housing if damage is caused by a Failure of any of the above covered components.



Transmission

All internally lubricated parts contained within the transmission case; gears; bearings; internal drive gears; internal selector mechanism and transmission mounts. Transmission case if damaged as a result of the Failure of an internally lubricated transmission component. *(Clutch assembly and cable are not covered).*

Primary Drive

All internally lubricated parts *(except clutch and hub assemblies)* contained within the primary drive case; all gears; bearings; internal drive gears and chains; internal selector mechanism. Primary drive case if damaged as a result of the Failure of a covered primary drive component.



Drive Axle Assembly

(Shaft driven motorcycles and ATVs)
Differential housing; transaxle housing; final drive housing; all internally lubricated parts of the foregoing; axle shafts; constant velocity joints; universal joints; drive shafts; locking hubs; hub bearings; locking rings; supports; retainers and bearings.



Front & Rear Suspension

All internally lubricated parts contained within the front fork tubes and front hub; swing arm bearings or bushings; front and rear wheel bearings; frame; swing arm; upper and lower control arms; ball joints; king pins; bushings and spindle. Front fork tubes and front hub if damaged as a result of the Failure of a covered suspension component.



Steering

Upper and lower steering stem bearings and bushing axle; steering stem; handle bar; steering stem nut, rod ends. Steering stem shaft if damaged as a result of the Failure of a covered steering component.



Brake

Brake backing plates; brake hubs; disc rotors; calipers; master cylinder assembly; hydraulic lines and fittings; drum brake actuating cam; secured hardware.



Electrical

Alternator; starter assembly; manually operated switches; cooling fan motor; wiring harness; ignition coil(s); rectifier; stator assembly; rotor assembly; CDI control box/electronic ignition control module; magneto; electronic fuel injection control module and voltage regulator.



Gauges

All factory instrumentation (mechanical and electronic) and electronic instrument sensors. *(Light bulbs are not covered).*



Fuel System

Petcock; fuel lines and fittings; fuel pump and housing; diaphragms; springs; valves and actuating lever.

Touring Bikes

Digital dash components; control cables; factory installed sound system (Speakers are not covered); fairing hardware, brackets, switches, covers, latches and hinges; saddlebag/travel trunk latches, hinges and mounting hardware.



Seals & Gaskets *(New Vehicles Only)*

Coverage will be extended to include Seals and Gaskets Coverage on covered components.

Personal Watercraft Coverage



Engine

All internally lubricated parts including: pistons; piston rings and pins; crankshaft and main bearings; connecting rods and rod bearings; reed valves and reed blocks; cylinder heads; crankcase.



Lubricating System

Complete oil injection system; oil pump; oil injection drive gear; oil tank; oil cap; oil level sensor and oil lines.



Fuel System

Fuel tank, fuel cap; petcock and fuel lines.



Drive Line System

Drive shaft; bushings; bearings and flywheel.



Pump System

All internally lubricated parts within pump housing; housing; bearings; impeller and bushings.



Controls

Starter and choke primer switches; run and stop switches; throttle control handle; throttle cable and ignition switch.



Steering

Steering control assembly; steering gate; rudder and nozzle *(excluding cables).*



Electrical

Alternator; starter; starter solenoid; ignition coils; rectifier; stator assembly; CDI box; electronic ignition module; voltage regulator, electrically operated gauges and wiring harness.



Seals & Gaskets* *(New Vehicles Only)*

Coverage will be extend to include Seals and Gaskets Coverage on covered components. * *Applies to both Personal Watercraft and Jetboat Coverage*

Jetboat Coverage



Engine

All internally lubricated parts including: pistons, rings, pins, crankshaft and main bearings, connecting rods and rod bearings, reeds and reed blocks, cylinder heads, crankcase, flywheel. Cylinder block if damaged as a result of the Failure of an internally lubricated engine component.



Lubricating System

Oil pump; oil injection drive gear and/or shaft; oil tank; oil cap; oil level sensor; oil level warning horn; oil lines; check valve; complete oil injection metering system.



Fuel System

Fuel delivery pump; fuel injection pump; fuel injector(s); fuel tank; fuel cap; petcock; flame arrester/air silencer; fuel lines; EFI (DFI) control module.



U-Joint Housing/Drive Line System

Drive mount and steering components; transom plate; U-joint housing; U-joint housing bearing; U-joints; drive shaft(s); bushings; bearings; flywheel; pivot pin; shift lever.



Jet Drive/Pump System

All internally lubricated parts in the pump housing; housing; bearings; impeller; bushings.



Controls

Neutral start switch assembly; starter/choke primer switch; starter/stop button; throttle control handle; throttle cam lever; throttle and shift cable; shift interrupter switch; tilt/trim switch and ignition switch *(excluding key and tumbler).*



Steering

Steering control helm assembly; steering gate; rudder; nozzle *(excluding cables)*; steering bracket and bushing; swivel bracket bearing; control rack and yoke assembly; power steering pump; power cylinder assembly; steering wheel and coupling; steering cable.



Electrical

Alternator; starter assembly; starter solenoid; voltage regulator; rectifier; ignition coil; switch box/power pack; electronic ignition module; trigger and sensor; windshield wiper motor; CDI box; all electrically operated gauges.



Lower Unit

Gearcase head; bearing; oil retainer; gearcase assembly; driveshaft and upper bearing; shift rod and cover assembly; lower pinion bearing; forward and/or pinion gear; reverse gear; shift fork. Gearcase and/or propeller shaft if damaged as a result of the Failure of a lubricated covered component.



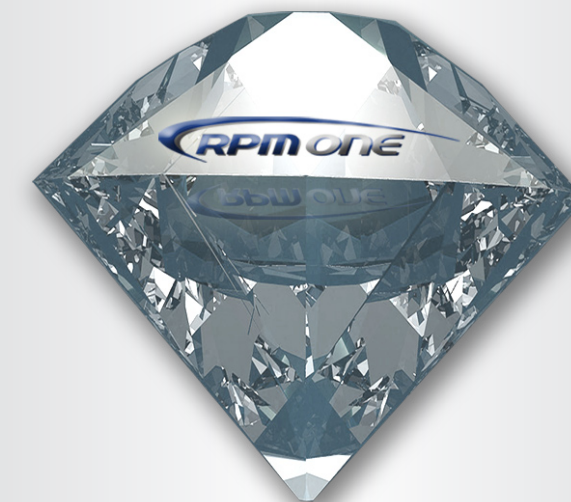
Power Trim and Tilt

Spring sending unit; oil pump; pump relief valve; spring; O-ring; trim cylinder; tilt cylinder; manual release valve; hydraulic pump; reverse lock valve; power tilt motor; power trim motor; mounts; pivots.

DIAMOND PROGRAM

The Ultimate in Comprehensive Coverage

While Platinum offers extensive named component coverage, Diamond is for those who desire an even higher level of coverage and security. Diamond includes all benefits and components covered under Platinum, as well as additional parts too numerous to list. It is so extensive that it covers virtually all functional parts of your unit. Simply stated, if it is not among a short list of exclusions, it is covered.



This brochure is intended to provide general product description only. It is not a contract or legally binding. See each product sales contract for specific details, conditions and limits.